

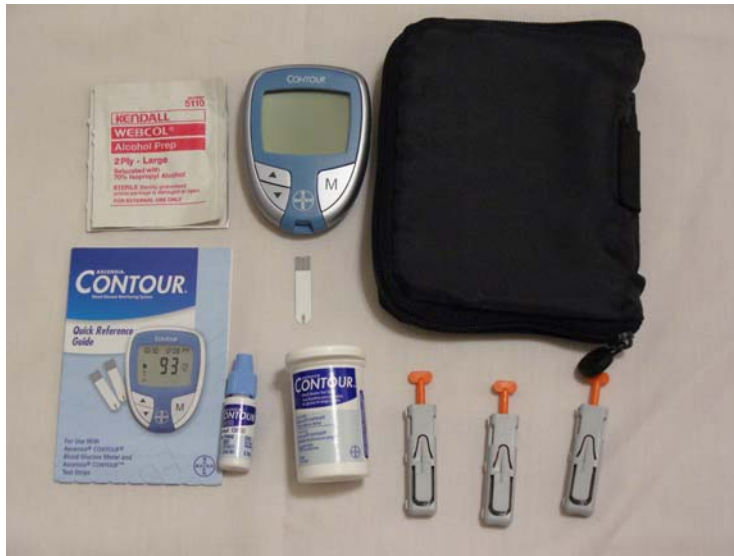
Using the Bayer Ascensia Contour Blood Glucose Monitoring System (BGMS)



Charlottesville-Albemarle Rescue Squad

Jim Miller, RN, CFRN, NREMT-P

The System



Contents:

- Test Strips
- Meter
- Control Solution
- Storage Case
- Alcohol Preps (5)
- Lancing Device (5)
- Quick Reference Guide

Specifications

- Measuring Time
5 seconds
- Operating Temperature
41° to 113° Fahrenheit
- Measuring Range
10 to 600 mg/dl
“HI” Alarm: BGL greater than 600 mg/dl
“LO” Alarm: BGL less than 10 mg/dl

Using the Meter

- The meter is turned on by inserting the test strip into the bottom of the meter
- Insert the strip silver side up
- Now ready for a sample



Weekly “Controls”

- The Bayer Contour System does not require controls or coding to be ran.
- CARS has adopted the policy to run a “Normal” control every Monday on each unit.
- This is to be done to assess the accuracy of the monitor and/or the test strips.
- Also assesses the battery life of the monitor.

Dating the test strips and control solution

- Date the test strips and the control solution with the date they are placed in service (opened)
- Discard after 6 months from the in service date
- Store at room temp

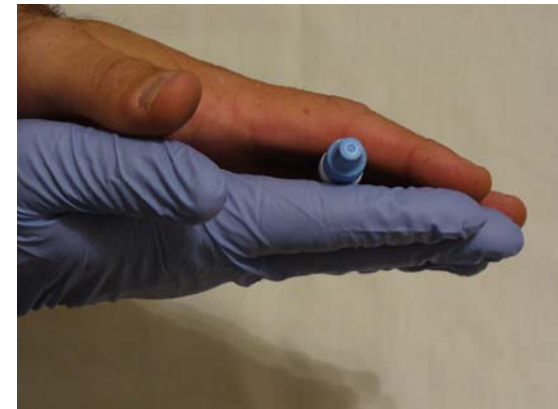


Running a “Control”

Confirm that the control solution and test strips are within date.

Slowly agitate the control solution back and forth between your hands.

Open the test container and remove a test strip.



Running a “Control” (cont.)

- Holding the round end of the test strip, insert the strip (silver side up) into the test slot until it stops and a beep sounds and the “apply sample” icon appears.
- Squeeze a small drop of control solution onto a non-porous surface, such as the fingertip of a gloved hand.
- Touch and hold the test end of the test strip to the drop until the glucometer beeps. The timer will count down 5 seconds and the test result will appear in the display. Remove strip and monitor will turn “off”



Documenting the “Control” Results

- Compare the results to the range printed on the side of the test strip container (back lower side).
- Record the CARS meter number, the date, the control lot number, the control range, and the test results in the CARS BGMS log.
- If the results are inconsistent or are not within the specific range, make sure the control solution and test strips are within date, the batteries are working, and the test solution is at room temperature. Repeat the control test. If the results are once again out of range, place the unit out of service and notify the on-duty supervisor.
- Log will be located in the supply room with the extra BGMS supplies
- This needs to be done on each monitor every Monday.

Patient Sampling

Select the most appropriate site:

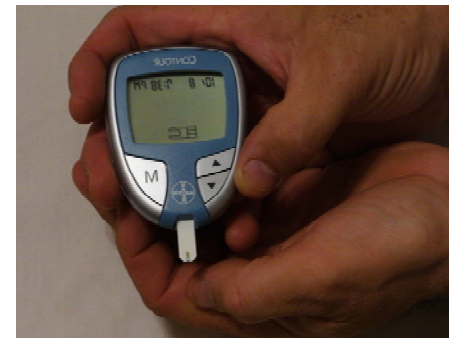
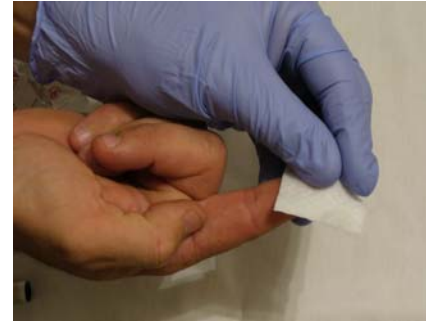
- Fingertips
- Ear lobe
- Palm
- Forearm (last suggested site)

Heel stick in infants

Cleanse the site with alcohol prep

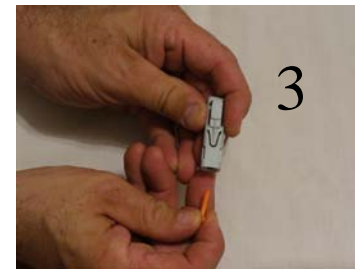
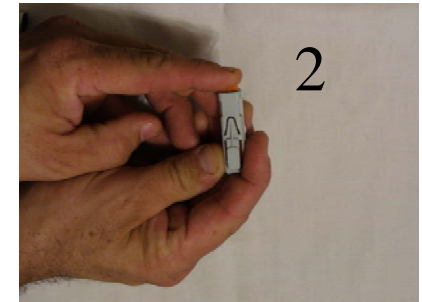
Remove the test strip

With the BGM off, insert the test strip into the monitor until a beep sounds and the “apply sample” icon appears



Patient Sampling (cont.)

- Activate the lancing device by pushing the orange tab in till it clicks
- Remove the orange tab
- Press device against the site and press the trigger
- Very gently squeeze the site till a blood droplet forms (squeezing or milking firmly may cause inaccurate results)
- Draw blood up into the test strip
- Wait 5 seconds for results
- Repeat if necessary



Results

- If the patient has a chief complaint of Altered Level of Consciousness or Seizures, consider obtaining a blood sample
- ALL level of providers may obtain a sample
- If the blood glucose results are **80 mg/dl or less**, administer Dextrose (oral and/or IV) or Glucagon. Even if the results are greater than 80 mg/dl and the patient continues to exhibit signs of hypo-glycemia, it should be treated with Dextrose or Glucagon

EMT-Basic

- If the patient has an altered mental status or has a BGL of 80 mg/dl or less, request an ALS support unit or rapidly transport to the nearest appropriate hospital.
- Follow the 2006 TJEMS Regional Patient Care Guidelines
- Reassess BGL after each therapeutic intervention

EMT-J, Enhanced, Intermediate/Paramedic

- Follow the 2006 TJEMS Regional Patient Care Guidelines
- Reassess BGL after each therapeutic intervention

Clinical Laboratory Improvement Amendments (CLIA) Waiver

- The Charlottesville-Albemarle Rescue Squad shall be FDA compliant by maintaining a current CLIA waiver.
- The CLIA waiver will be renewed every 2 years.
- There shall be a copy of the CLIA waiver posted in each ambulance/zone car with a BGMS.

Cleaning

- Clean the unit with a non-abrasive hospital grade disinfectant or a 10% bleach solution
- Spray the cleaner onto an applicator (towel), then wipe the unit down.
- DO NOT submerge or saturate with cleaner solution. Doing so will damage the unit

CARS Post-Test

1. T/F: The monitor is turned on by inserting a test strip.
2. What day of the week are controls ran?
3. Where are the control results recorded?
4. T/F: Only ALS providers can perform a BGM test.
5. What is the minimal patient blood glucose allowed before treating the patient?

CARS Post-Test (cont.)

6. Name 3 of the 4 sites in the adult you can obtain a blood sample from.
7. What needs to be done when opening a NEW bottle of strips or control solution?
8. How often does CARS need to re-new the CLIA waiver?
9. What temperature should the strips and control solution be stored at?
10. T/F: It is OK to squeeze hard or “milk” a fingertip in order to obtain a drop of blood.